

EDDO Biomechanics

PORTABLE 3D MOTION CAPTURE & ANALYSIS SYSTEM

1 Protocols

STT protocols are backed by scientific literature and numerous laboratories around the world. **EDDO Biomechanics** includes a wide range of protocols such as running, cycling or walking analysis. You can also study each joint individually if desired. The system provides the most relevant data on the movement of each joint.

2 Portable

With less than 60 centimeters in total length, the **EDDO Biomechanics** optical system offers complete motion capture and 3D analysis capabilities without being restricted to a single location. The system is transported and mounted quickly.

3 Integration

The system can operate simulta-

neously with third-party devices such as surface EMGs, force plates or pressure plates. The data is synchronized and displayed on the system interface.

4 Biofeedback

This tool is designed for real-time motion evaluation. It allows defining simple conditions, which are verified on the go. Whenever a condition is met, the user will receive immediate notice.

5 Unlimited license

Do not pay for updates. The owner of an **EDDO Biomechanics** system gets regular updates for free.

6 Wireless

Movement analysis is performed by placing small markers on certain anatomical points.

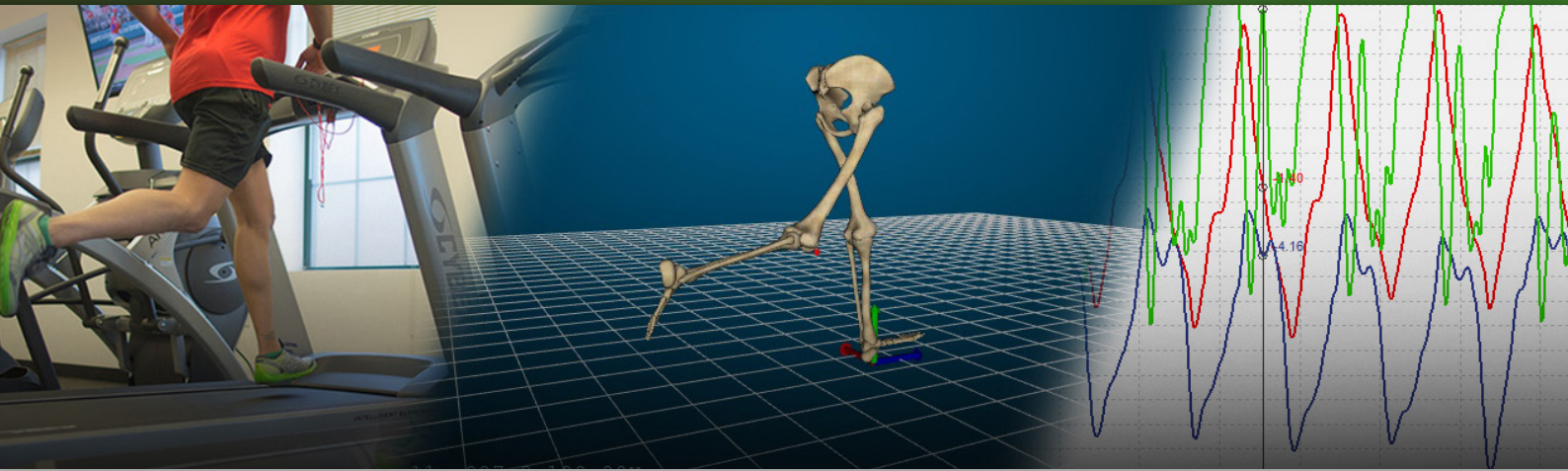
Therefore, it is wireless, the patient or athlete has no physical restrictions, and he or she can move freely.

7 Reports

Reports are automatically generated using pre-designed templates. These templates can be modified by the user adding contact information and logo or adding and deleting curves, etc.

8 Easy to use

EDDO Biomechanics is easy to use for anyone. STT provides assistance for the installation and some training courses (usually via internet or in-situ) as well as technical support. It also provides detailed documentation. The interface is very intuitive and user-friendly.

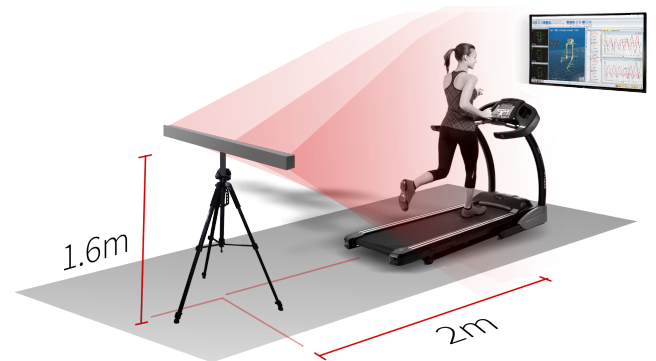
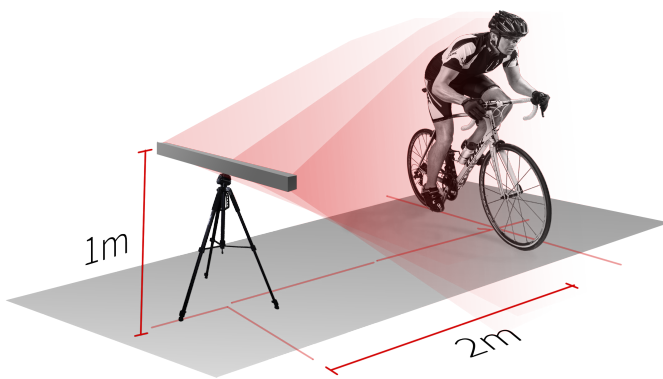


EDDO Biomechanics includes:

- Permanent license
- Capture cameras, integrated in the aluminum bar
- Synchronization hub
- Cabling
- A complete set of markers
- Calibration tool
- High adhesion stickers
- Tripod
- Transporting case

Add optionally:

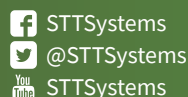
- Workstation
- External television
- High-speed video camera with built-in tripod
- Webcam with tripod
- Additional markers
- EMG, power platforms and pressure platforms



STT Systems

www.stt-systems.com
 Parque Empresarial Zuatzu
 Edificio Easo, 2ª planta
 20018 - San Sebastian (Spain)
 Phone: (+34) 943 31 77 77

Follow us on social networks:



E-mail us: info@stt-systems.com



STT works since 1998 in technologies of artificial vision and motion capture.